

EMPIRE

Jo Conjaerts

$\text{♩} = 144$

f

4

7

10

13

16

19

22

25

Fine

D.C.
al Fine

GLORIEUX

L. Pustjens

♩ = 132

f

6

mf cresc.

11

16 17

21 25

28 33

34

39 41

45

FINE

KERMESSE D' ÉTÉ

Jo Conjaerts

Tempo di Valse

f

7

13 17

18

24

30 33 34

35

42

49 50

mf

54 rit...

FINE

LE CLAIRON

J.G. Schroën

Musical score for 'Le Clairon' by J.G. Schroën. The score is written in treble clef and consists of 75 measures. It begins with a tempo of 100 (quarter note) and a dynamic of *f*. At measure 11, the tempo changes to 120 (quarter note) and the dynamic remains *f*. The score includes various dynamics such as *f*, *mf*, *p*, and *pp*, as well as articulation marks like accents and slurs. A *rallentando* section begins at measure 34. At measure 42, the tempo changes to 60 (half note) and the time signature changes to 3/4. The score concludes at measure 75 with a *pp* dynamic and the word 'FINE'.

LIMBURGIA

J.G. Schroën

♩ = 120

f

5 *rallentando* *a tempo* 9 *mf*

10 *cresc.*

15 *mf* *cresc.*

19 *f* *p*

25 *mf*

29 *cresc.* *f* *p*

2 34 *f*

38 *rallentando* **FINE**

PACIFIQUE

Jo Conjaerts

Andante ♩ = 76

mf

8

16

17 **Vivo**

f

21

25

27

33 **Andante**

mf

40

f

47 **Vivo** ♩ = 144

ff

f

54 **Andante**

57

mf

61

f

FINE

PETIT SOLO

J.G. Schroën

$\text{♩} \pm 116$

5

7

14

21

27 29

34 37

40

45

51

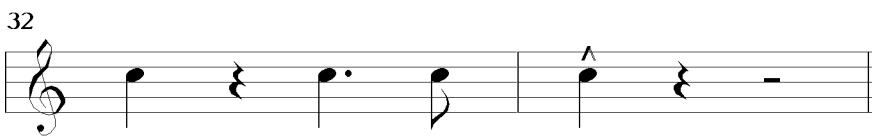
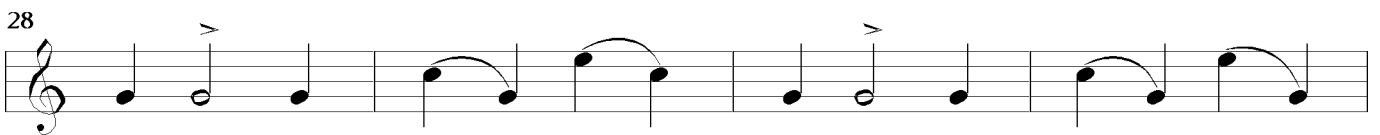
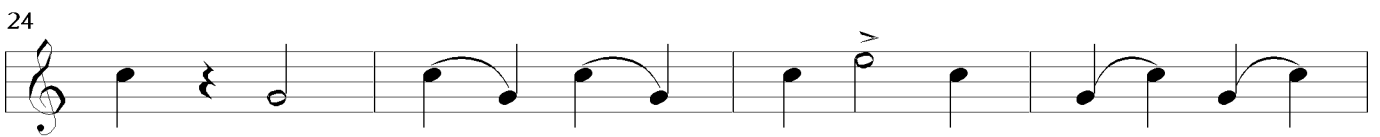
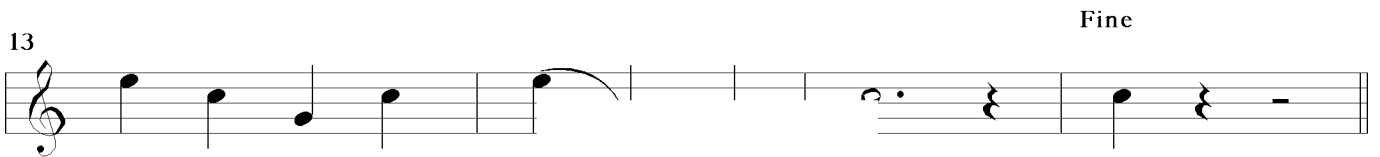
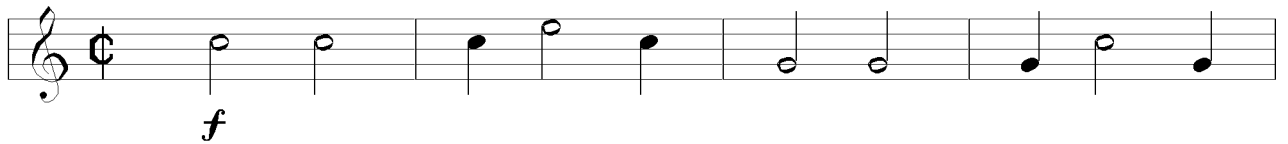
f *mf* *cresc.* *f* *f* *p* *f* *f* *ff*

FINE

PLAISANT

Jo Conjaerts

$\text{♩} = 144$

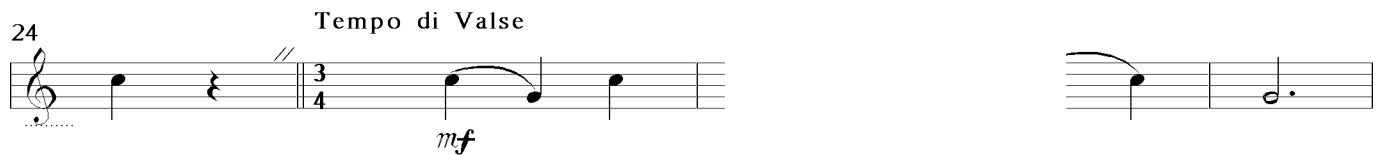
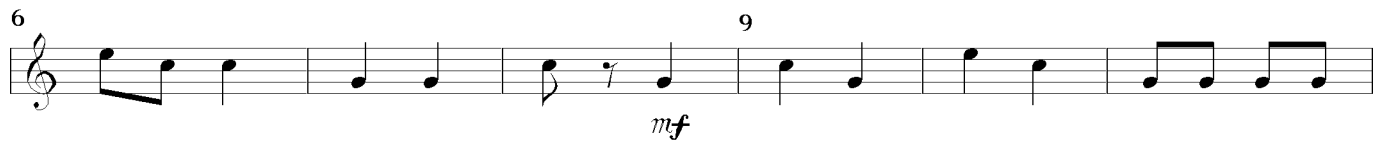


D.C.
al Fine

PLAY-IN

Jo Conjaerts

Allegro ♩ = 128



FINE