

A LA CHASSE

Jo Conjaerts

♩ = 144

f

6

9

11

16

♩ = 128

21

♩ = 144

27

32

36

40

♩ = 144

45

(ad lib.)

FINE

AMARIL

Jo Conjaerts

Andante

f

7 Marcia

12 17

19 rit... 25

26 Andante

32 Marcia

38 Andante

44 Marcia

49

55 rit... FINE

ATTENT

Jo Conjaerts

♩ = 144

f *mf*

6 9 3

11 *f* ♩ = 176

16 21

22

29 ♩ = 112

f

34 37

39

44 rit... ♩ = 144

49 *rallentando* FINE

FANTASIE MILITAIRE

Jo Conjaerts

Allegro ♩ = 138 rallentando a tempo

7

12 14

19 22

27 30

35 38 3 3 3 3 3

42 3 3 3 3 3 47 3

49 ♩ = 144
pp poco a poco cresc.

57 59 3

63 rall.. (ad lib.)
FINE
ff

GRANDSOLO

J.G. Schroën

♩ = 120

f

♩ = 80

mf

7

♩ = 100

f

14

21

♩ = 120

mf

29

32

♩ = 140

f

40

45

47

♩ = 160

f

54

61

69

ff

rallentando

FINE

JOIE

Jo Conjaerts

$\text{♩} = 144$

mf

4

7 *Fine*

10 *f*

13

16 *p*

20 *p*

23 *f*

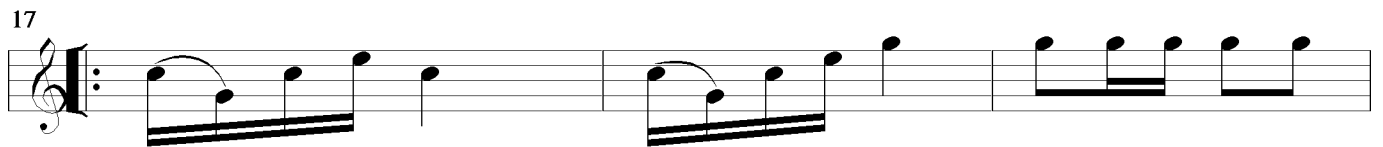
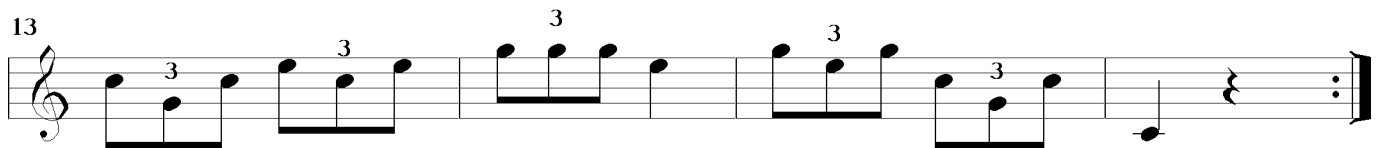
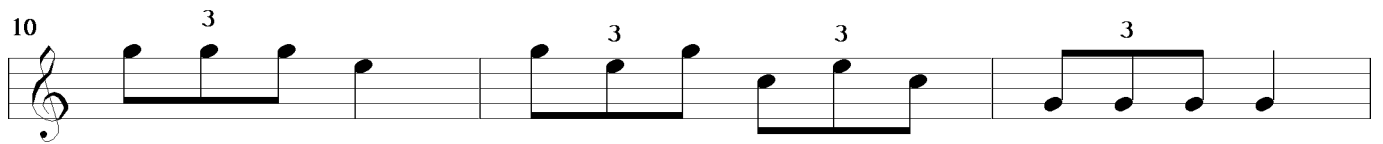
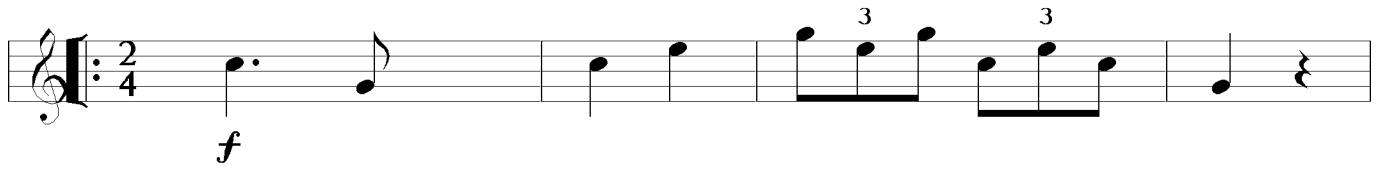
26 *dim.*

29 *D.C. al Fine*

L' HIVER

L. Pustjens

♩ = 92

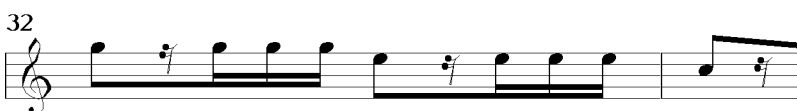


FINE

PARTITA

L. Pustjens

♩. = 88



FINE